

HANDMADE FARMHOUSE AND RUSTIC FURNITURE

REVISED 06-01-25



LOCATED AT

PAINTED GRACE'S FURNITURE SHOWROOM

106 SOUTH PUBLIC SQUARE

CENTERVILLE, TN 37033

615-924-9120

Paintedgrace55@gmail.com

www.paintedgrace55.com



Ron and I have always had a fancy for Farmhouse and Rustic Furniture. If we had more room in our house, it would be full of these fine pieces. However, we don't, so we are excited that we are able to offer this furniture to our customers.

These quality pieces of furniture are hand crafted in Tennessee and come in a variety of styles and colors; Black, Buttermilk, Sage, Gray, Riverstone, Turquoise, Barn Red, and now a rustic blue.

We have a large inventory at our showroom, but we also take custom orders for those special pieces and color combinations.

I am confident that once you take home one of these handmade pieces you'll be coming back for more.

Donna and Ron Irlinger



Corner Cabinet – No doors

Size: 77" Tall – 31" Wide – 12" Deep



Hutch - Hoosier

Top: Size: 40" Tall – 35.5" Wide – 13" Deep

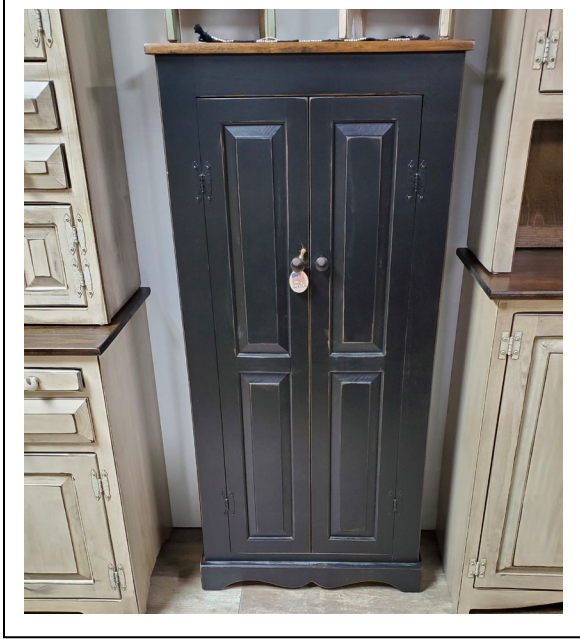
Bottom: 33" Tall – 35.5" Wide – 17.5" Deep



Hutch – 48" Sewing Cabinet

Top: Size: 39" Tall – 48" Wide – 11" Deep

Bottom: 37" Tall – 48" Wide – 14.5" Deep



Chimney Skinny – Double Doors

Size: 55.5" Tall – 25.5" Wide – 10.75" Deep



Chimney – Double Doors

Size: 72" Tall – 20" Wide – 13" Deep



Candle Stands

Size: 36" Tall – 10" Wide – 10" Deep



Veggie Bin

Size: 33" Tall – 17" Wide – 12" Deep



Step Back Bottom – 2 draw – 2 door – 2 shelves

Size: 34" Tall – 47" Wide – 13" Deep



Buffet – 2 door – 2 draw

Size: 33" Tall – 46" Wide – 13" Deep



Console – 2 Draw

Size: 30.5" Tall – 36" Wide – 11" Deep



Bread Box

Size: 14.5" Tall – 20.5" Wide – 11" Deep



Biscuit – Single Doors

Size: 36" Tall – 22" Wide – 11" Deep



Sewing Cabinet – Single Door

Size: 37" Tall – 24" Wide – 13" Deep



Trash Can

Size: 36" Tall – 21" Wide – 13" Deep



Children's Desk and 2 Chairs

Size: 23.5" Tall – 30" Wide – 18" Deep



Toy Box with Shelf

Size: 68" Tall – 33" Wide – 49" Deep



Butler with Trash Can

Size: 72" Tall – 21.5" Wide – 13" Deep



Bathroom Cabinet with Trash Can

Size: 48" Tall – 15" Wide – 11" Deep



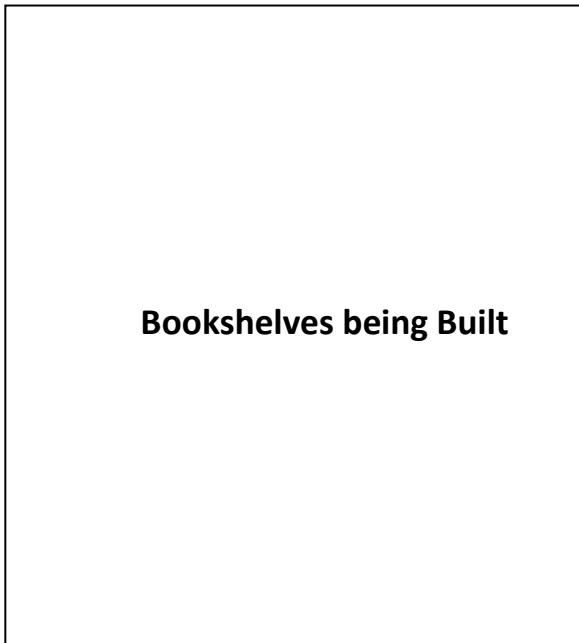
Lamp Stand

Size: 31" Tall – 15" Wide – 11" Deep



Window Bench

Size: 21" Tall – 36" Wide – 11" Deep



Bookshelves being Built



Chimney - Skinny

Size: 60" Tall – 14.5" Wide – 11" Deep



Biscuit – Double Door

Size: 36" Tall – 36" Wide – 12" Deep



Lingerie Cabinet

Size: 46.5" Tall – 16" Wide – 13" Deep



Salt House – Small & 3 foot

Size: 17.5" Tall – 8.5" Wide – 5.5" Deep

Size: 39" Tall – 12" Wide – 13.5" Deep

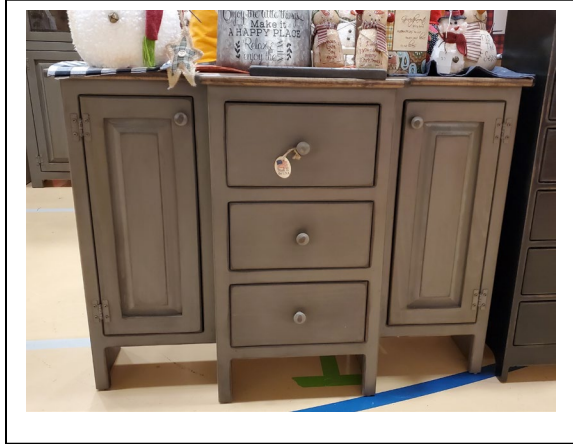


Church – Small One

Size: 22.5" Tall – 9.25" Wide – 6.75" Deep

Church - Medium One

Size: 32.5" Tall – 7.5" Wide – 7.5" Deep



Curved Front Dresser/Cupboard
Size: 34" Tall – 45.5" Wide – 13" Deep



48 Inch Desk
Size: 32" Tall – 48" Wide – 22" Deep



Hall Tree with Mirror
Size: 70" Tall – 35.5" Wide – 18" Deep



Panel Bed

Size: Twin – Full – Queen - King



3-foot Bench

Size: 20" Tall – 36" Wide – 11" Deep



3 Foot Bead board Bench

Size: 40" Tall – 36" Wide – 15.5" Deep



4 Foot Bead board Bench

Size: 40" Tall – 47" Wide – 15.5" Deep



Tall Buffet - 3 Door – 3 Draw

Size: 51" Tall – 48" Wide – 13" Deep



4 Foot Double Biscuit

Size: 50.5 Tall – 36" Wide – 15.5" Deep

Picture Coming Soon



Cabinet - 1 Door – 1 Draw

Size: 21" Wide x 36" Tall x 11" Deep

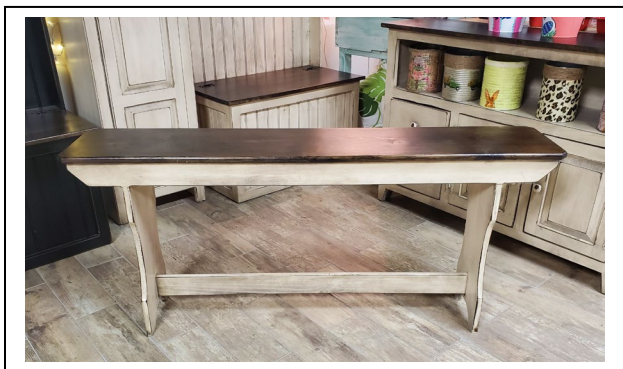
Single Pie Safe

Size: 48" Tall – 19.5" Wide – 15.5" Deep



Small Corner

Size: 68" Tall – 21" Wide – 12" Deep



55 - inch Bench

Size: 24" Tall – 55" Wide – 11" Deep



Quilt Dresser – XL Dbl Grid Door

Size: 48.5" Tall – 48" Wide – 16" Deep



Hutch – 2 door, 1 drawer

Size: 72.5" Tall – 21" Wide – 11" Deep



Night Stand

Size: 26.5" Tall – 22" Wide – 16" Deep



Dresser – Mule Chest

Size: 56" Tall – 48" Wide – 15" Deep



Console Table

Size: 33" Tall – 48" Wide – 18" Deep



Desk – Rails on Draw

Size: 30" Tall – 40.5" Wide – 16" Deep



Skelp Desk

Size: 30" Tall – 40" Wide – 15.5" Deep



Chest on Chest

Size: 56" Tall – 36" Wide – 17" Deep



Miniature Outhouse

Size: 26" Tall – 8.5" Wide –
6.25" Deep



Rod on Top

Toilet Paper Holder



Console 2 doors no draws.

Size: 34" Tall – 48" Wide – 16" Deep



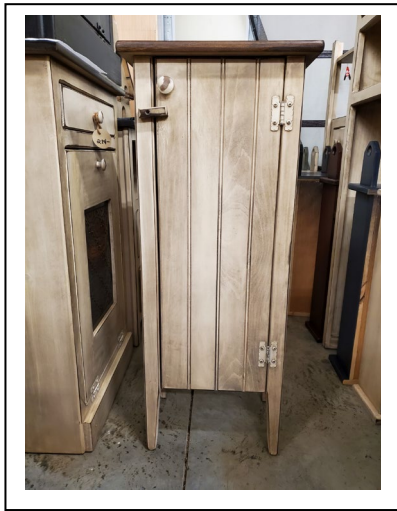
Dry Sink

Size: 50" Tall – 30" Wide – 17.5" Deep



Trippel Biscuit

Size: 36" Tall – 54" Wide – 11" Deep



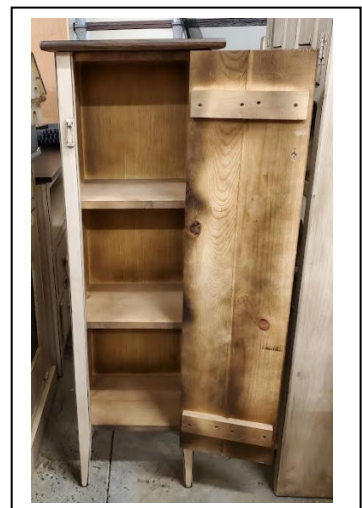
3-foot Fence Cabinet

Size: 36" Tall – 15" Wide – 11" Deep



2-foot Fence Cabinet

Size: 24" Tall – 15" Wide – 11" Deep



4-foot Fence Cabinet

Size: 48" Tall – 15" Wide – 11" Deep



Over Commode Cabinet

Size: 71" Tall – 24" Wide – 10" Deep



Bird Bench

Size: 65" Tall – 20" Wide – 19" Deep



Blanket Chest

Size: 22" Tall – 47" Wide – 19" Deep



Fred's Table

Size: 26.5" Tall – 18" Wide – 13.5" Deep



XL Corner Cabinet

Size: 77" Tall – 36" Wide – 21" Deep



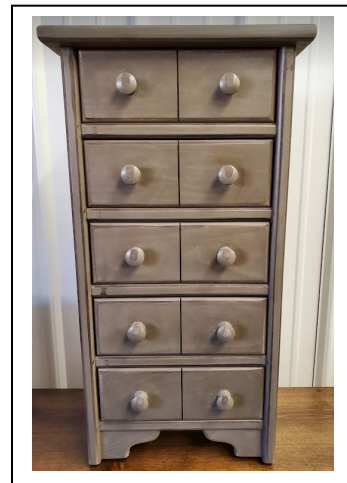
Credenza Console – 3 Draw

Size: 33" Tall – 48" Wide – 14" Deep



Cabinet - 2 draw – 2 Door

Size: 36" Tall – 35" Wide – 1" Deep



Keepsakes Storage – 5 Draw

Size: 25" Tall – 13" Wide – 8" Deep



Single Biscuit – 4 Foot

Size: 50" Tall – 22" Wide – 11" Deep



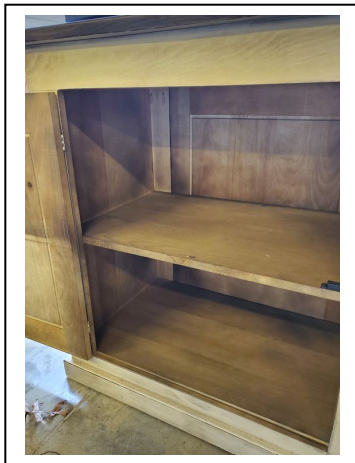
Small Vintage Dry Sink

Size: 36" Tall – 22" Wide – 12" Deep



End Table or Nightstand

Size: 27" Tall – 22.5" Wide – 11" Deep



Island Door Both Sides

Size: 36" Tall – 47" Wide – 21.5" Deep



Nick Knack - Jewelry – 10 Draw

Size: 25" Tall – 23" Wide – 8" Deep



Future Piece of Furniture



Allen Cabinet

Size: 52.5" Tall – 34" Wide – 13" Deep



Jelly Cabinet

Size: 50" Tall – 22" Wide – 11" Deep



Paper Towel Holder

Size: 13" Tall – 13" Wide – 7.5" Deep



Double Biscuit 3 Shelves

Size: 42" Tall – 50" Wide – 13" Deep



Bathroom Trash Can

Size: 20" Tall – 14" Wide – 9" Deep



Wine Rack and Hutch

Base: Size: 37" Tall – 48" Wide – 16.5" Deep
Top: Size: 48" Tall – 46" Wide – 13" Deep



Coffee Bar

Size: 72" Tall – 39" Wide – 17" Deep



3 Grid Door Sofa Table

Size: 35" Tall – 54" Wide – 14.5" Deep



Sunny Days Cabinet

Size: 36" Tall – 47" Wide – 13" Deep



Double Trash Can

Size: 36" Tall – 39.5" Wide – 13" Deep



Medium Corner Cabinet

Size: 35" Tall – 54" Wide – 14.5" Deep



Country Catch All

Size: 30" Tall – 29" Wide – 29.5" Deep



Nightstand – Double Draw

Size: 28.5" Tall – 22" Wide – 16" Deep



Cabinet - 3 Door 3 Draw
Size: 51" Tall – 36" Wide – 11" Deep



Double Laundry Bin
Size: 50" Tall – 35" Wide – 15" Deep



Double Biscuit – Tall - Pane
Size: 72" Tall – 36" Wide – 12" Deep



Double Chimney
Size: 72" Tall – 36" Wide – 12" Deep



2 Door Sofa Table
Size: 29" Tall – 48" Wide – 13.5" Deep



Console – 2 Door 3 Shelf
Size: 31" Tall – 6 ft Wide – 13" Deep



2 Door – 2 Draw Cabinet -With Metal
Size: 36" Tall – 35" Wide – 11" Deep



Large Quilt Cabinet
Size: 56.5" Tall – 47.5" Wide – 16"
Deep



Linnen Cabinet

Size: 6 ft Tall – 24” Wide – 12” Deep



5 Draw

Size: 31.5” Tall – 16.5” Wide – 12” Deep



6 Draw

Size: 36” Tall – 17” Wide – 12” Deep

